

**Wadden Sea Forum**  
**WG ICZM, 12<sup>th</sup> Meeting**  
**Hamburg, 9 February 2011**

Final Draft Minutes

**1. Opening**

*Document: WG ICZM 12-1 Draft agenda*

The chair Herman Verheij welcomed the participants, thanked the host of the meeting Mr. Zettlitzer from RWE Dea AG and opened the meeting at 11:00 hours.

Due to the extended number of participants, a round of introduction took place. A list of participants is in **Annex 1**.

The agenda was adopted without amendments and is in **Annex 2**.

**2. Adoption of the minutes WG ICZM-11**

*Document: Final Draft Minutes ICZM 11*

The final draft minutes of the 11<sup>th</sup> meeting of WG ICZM, Hamburg, 16 September 2010 were **adopted**.

**3. Announcements**

Thomas Holst Christensen informed the meeting that the Task Group Climate of the TWSC would start its work in week 7. There would be an overlap of working issues with the ICZM groups, which should be considered by both groups.

Andres Kannen referred to the project KnowSeas (Knowledge-based Sustainable Management for Europe's Seas), of which the overall objective is a comprehensive scientific knowledge base and practical guidance for the application of the Ecosystem Approach to the sustainable development of Europe's regional seas. He announced a presentation about the project at the next meeting.

Holger Janssen reported about two projects in the North Sea.

a) Mapping of all human uses in the whole North Sea, which would cover a much larger area than the WSF WebGIS project and would map the uses in less detail. Nevertheless, EUCC-D would have a close look at the progress of that project.

b) An FP 7 project about modelling the main drivers of changes in the North Sea.

Herman Verheij reported about the progress of elaborating a Dutch-German integrated management plan for the Ems estuary, which would first mainly focus on Water Framework Directive and Natura 2000 issues. A first draft management plan would be expected for late 2013.

Christiane Sell-Greiser informed the meeting about ICZM implementation in Emden. The objective would be to implement projects, particularly with regard to harbour

development, referring to the ICZM principles to get experiences in this field. In a further step, an integrated spatial plan for the development of Emden and its vicinity should be elaborated and implemented. It is envisaged to implement a workshop in May 2011 to discuss ICZM local implementation with stakeholders and to find answers to problems in spatial planning and development.

The meeting welcomed the information and agreed to contribute to this workshop and to start cooperation.

#### **4. Data ICZM and Maritime Spatial Planning**

##### ***Presentation EUCC-D: WebGIS example***

The ICZM group in cooperation with EUCC-D initiated the project WebGIS, to implement a data base of all economic uses and nature protection in the Wadden Sea Region and the EEZs. Ramona Thamm from EUCC-D reported about the progress of project implementation.

The special meaning of the project is the connection of land and sea as well as data compilation in a transboundary context. So far, data availability in Germany and The Netherlands were quite good, while in Denmark increasing efforts were necessary to get the data. It is envisaged, to present a first version with layers of trilateral data at the WSF 18 meeting in Den Helder. In order to achieve this, EUCC-D will deliver a draft by 18 April 2011 and the working group will experience the WebGIS with first data layers in its next meeting on 2 May.

The presentation with headlines about experiences and progress of the project is in **Annex 3**.

#### **5. Sustainability indicator tool**

##### ***Document: WG ICZM 12-5.1 Pollution load in the Wadden Sea***

The secretary referred to the document and briefly explained the analysis of the contaminants in bird eggs. The contaminants were clustered into three groups and the data were converted into index values. The values are given for four regions from 2003 till 2009. Meanwhile, data from 2010 is also available. A prominent peak in pollution is shown for 2004, which might result of higher discharge by rivers (according to statement of Institute for Avian Research). The data of the indicator contaminants in bird eggs will be integrated in the indicator tool within the coming weeks. The secretary stated that a similar analysis would be made with the seal counts, of which the data was available on trilateral level, but an analysis and conversion into index values had to be done by an expert group.

Marcus Lange informed the meeting that a colleague from the Helmholtz-Zentrum Geesthacht (Johannes Bieser), who elaborated the documentation of the COWI indicator tool, might provide data about nutrients in the Wadden Sea after consultation with his department.

A further discussion about the feasibility of nutrients as a new indicator will be taken at the next meeting.

#### **6. Cooperation Waddenacademie**

The chair briefly introduced the Wadden Academie, which aims to identify gaps in the knowledge of the Wadden Sea Region, to program research and to disseminate the outcome. The main tasks are:

- Identifying gaps in cross-domain knowledge in order to assist in the sustainable development of the Wadden Sea Region and formulating research questions relevant to the region;
- Promoting a coherent research program at regional, national and international level;
- Promoting information supply and knowledge exchange between research institutes, government, industry and social organizations.

The meeting discussed levels of cooperation, taking into account that the Wadden Academie focuses on research activities, of which ICZM and sustainability indicators would be the main issues for collaboration. The meeting agreed to invite members of the Academie to one of the next ICZM meetings to discuss common issues and possible common tasks.

#### **7. Any other business**

No other business discussed.

#### **8. Next meeting**

The meeting **agreed** to hold the next meeting on 2 May 2011 at RWE Dea AG in Hamburg.

#### **9. Closing**

The chair thanked for the fruitful and interesting meeting and closed it at 14:45.

**Annex 2**

**Wadden Sea Forum  
WG ICZM, 12<sup>th</sup> Meeting  
Hamburg, 9 February 2011**

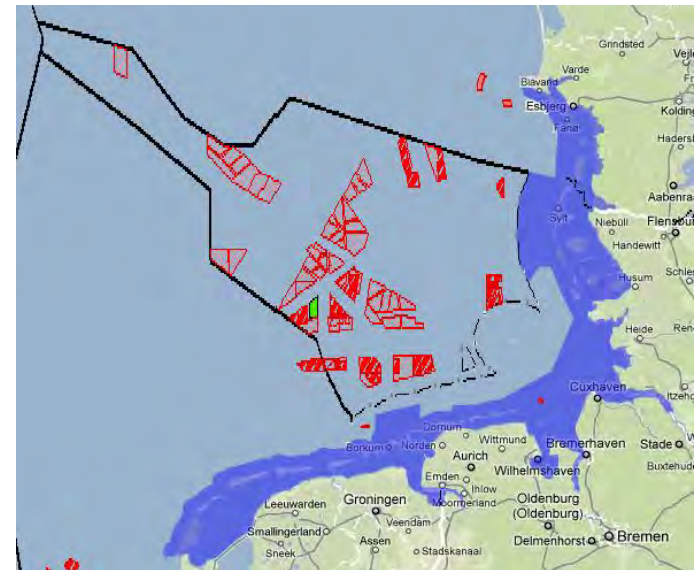
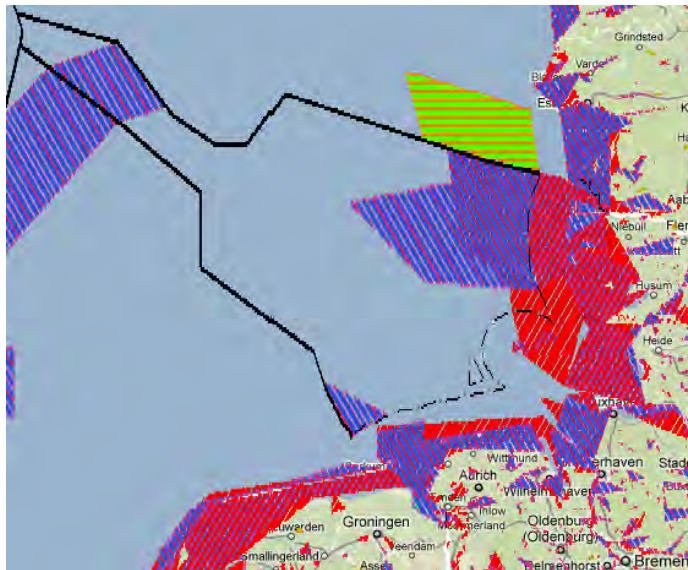
***A G E N D A***

- |                       |  |
|-----------------------|--|
| <b>Agenda item 1.</b> | <b>Opening</b>                                 |
| <b>Agenda item 2.</b> | <b>Adoption of the minutes WG ICZM-11</b>      |
| <b>Agenda item 3.</b> | <b>Announcements</b>                           |
| <b>Agenda item 4.</b> | <b>Data ICZM and Maritime Spatial Planning</b> |
| <b>Agenda item 5.</b> | <b>Sustainability indicator tool</b>           |
| <b>Agenda item 6.</b> | <b>Cooperation Waddenacademie</b>              |
| <b>Agenda item 7.</b> | <b>Any other business</b>                      |
| <b>Agenda item 8.</b> | <b>Next meeting</b>                            |
| <b>Agenda item 9.</b> | <b>Closing</b>                                 |

# WaddenGIS

**Ramona Thamm**

EUCC – The Coastal Union Germany



## Time line

---

- WaddenGIS prototype to 18 April 2011
- Public link for tests and presentation
- Feedback April / May
- Feedback from WSF?

# Content

---

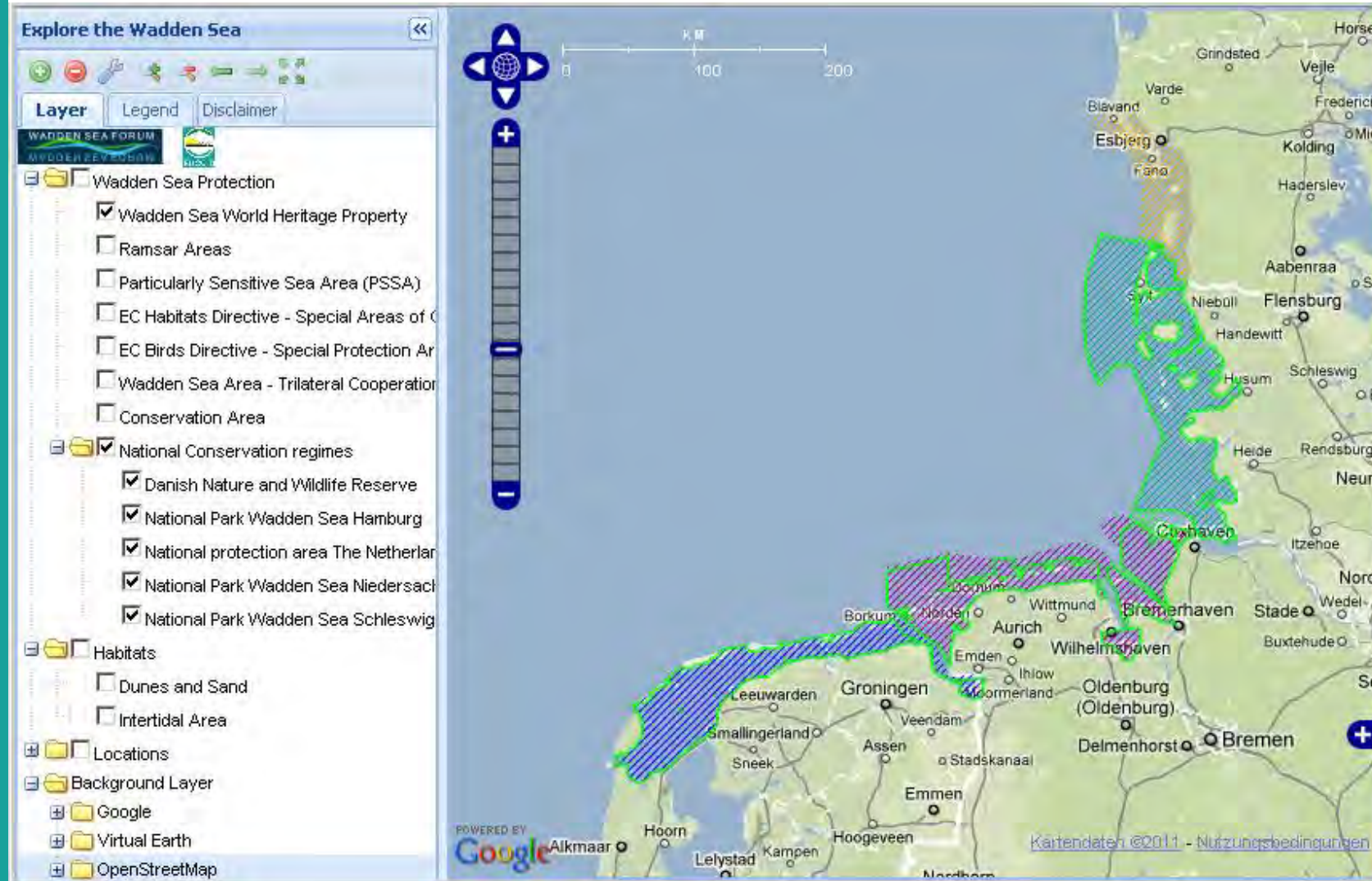
## April:

- Trilateral Cooperation Area
- Protected areas (NL, DE, DK)
- Habitat types
- Borders
- Spatial Planning in Germany EEZ
- CORINE land use data
- Background layer

## Open:

- Marine facilities NL, DK of Nautical Charts

# WaddenGIS



**Explore the Wadden Sea**

Layer Legend Disclaimer

WADDEN SEA FORUM  
WADDEN ZEEFORUM

- Wadden Sea Protection
  - Wadden Sea World Heritage Property
  - Ramsar Areas
  - Particularly Sensitive Sea Area (PSSA)
  - EC Habitats Directive - Special Areas of Conservation
  - EC Birds Directive - Special Protection Areas
  - Wadden Sea Area - Trilateral Cooperation
  - Conservation Area
- National Conservation regimes
  - Danish Nature and Wildlife Reserve
  - National Park Wadden Sea Hamburg
  - National protection area The Netherlands
  - National Park Wadden Sea Niedersachsen
  - National Park Wadden Sea Schleswig
- Habitats
  - Dunes and Sand
  - Intertidal Area
- Locations
- Background Layer
  - Google
  - Virtual Earth
  - OpenStreetMap

Map features: Scale bar (0-200 KM), Navigation controls, Map data: ©2011 - Nutzungsbedingungen