


## WSF-22 meeting

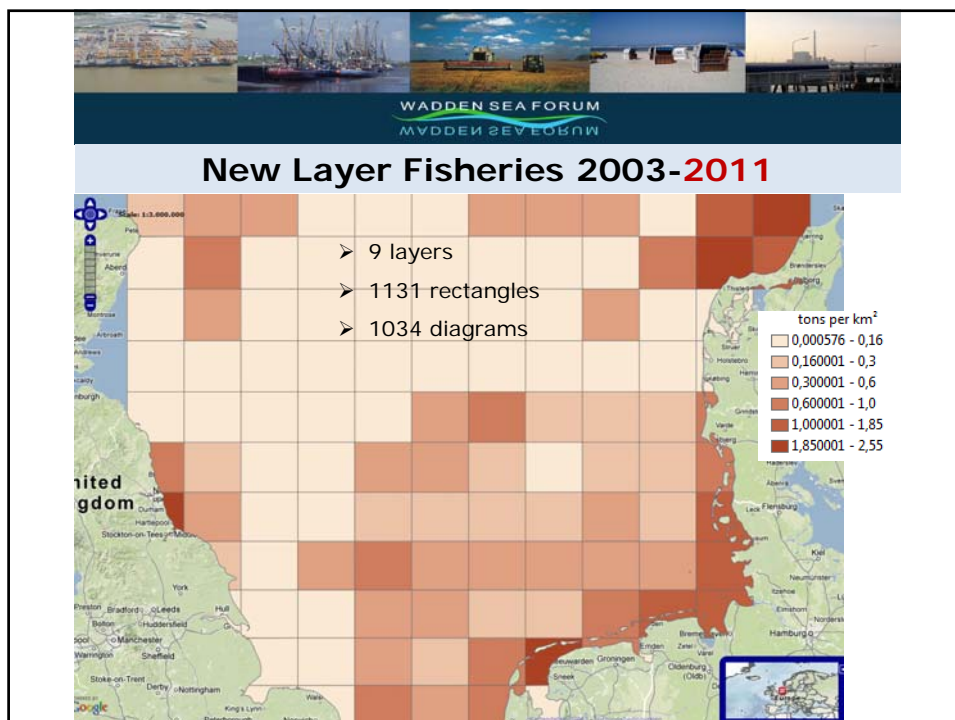
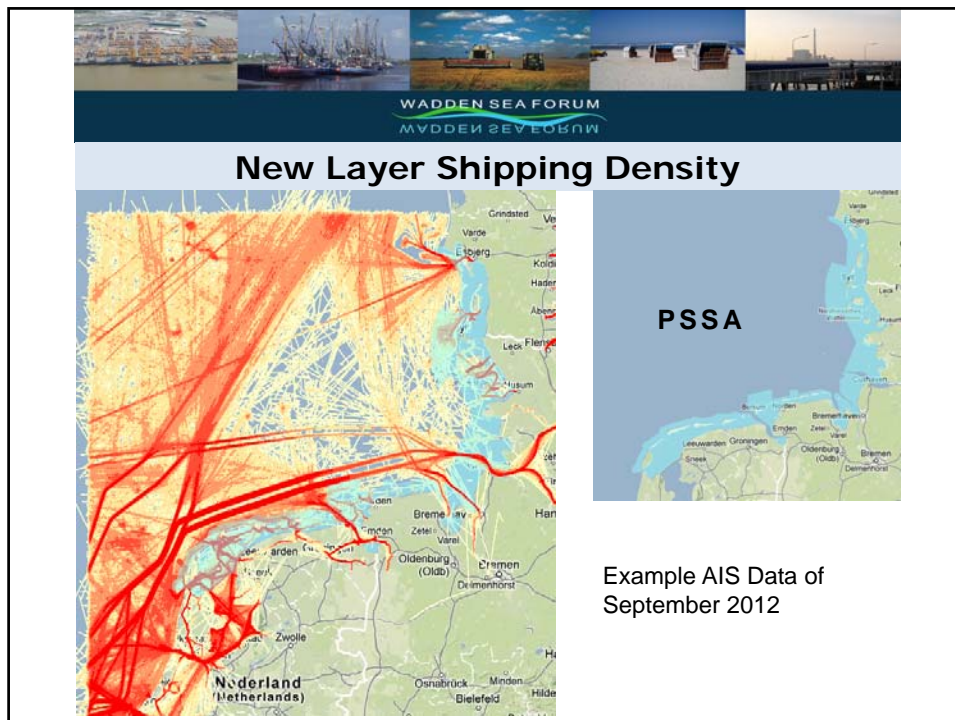
Information on the state of  
the WSR Planning Portal

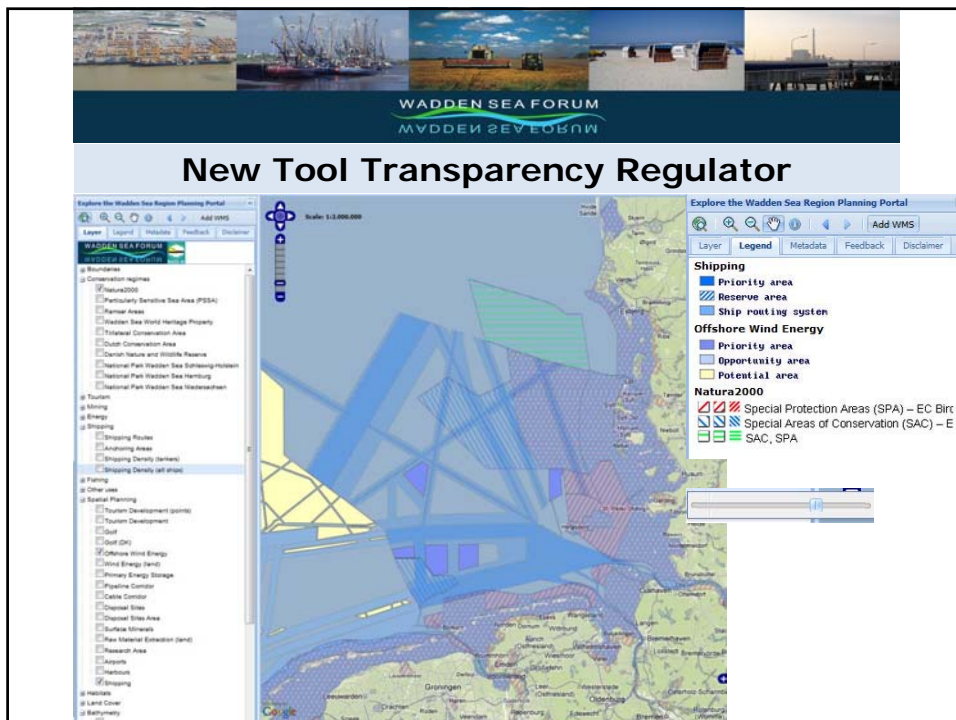
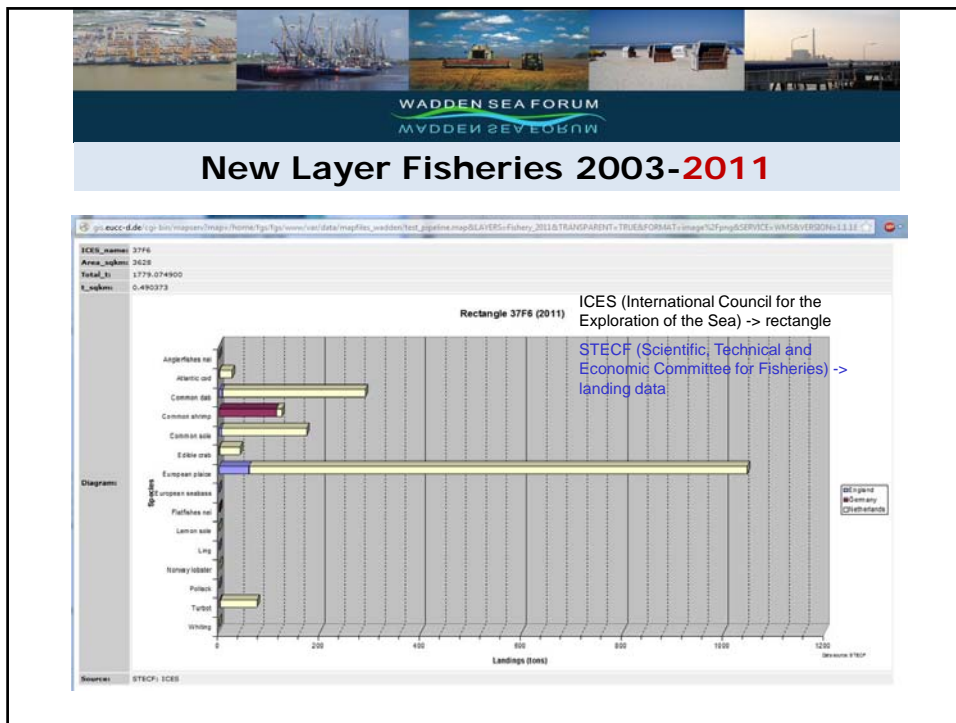
Herman Verheij  
Prepared by WSF Secretariat



## Progress WSR Planning Portal

Themes	Next steps
Fisheries	✓ finished
AIS layer	✓ finished
Development of administrative borders	✓ data available and edited ➤ development of an intuitive symbolization
Socio-economy and tourism	➤ collect different data ➤ first implementation of maps
Archaeological sites	✓ in contact ➤ wait on internal decisions
Coastal power plants on land	➤ not yet been processed
Transparency regulator	✓ finished
Add WMS	➤ finished





### New Tool WMS

Explore the Wadden Sea Region Planning Portal

Layer Legend Metadata Feedback Disclaimer

WADDEN SEA FORUM

Scale: 1:3,000,000

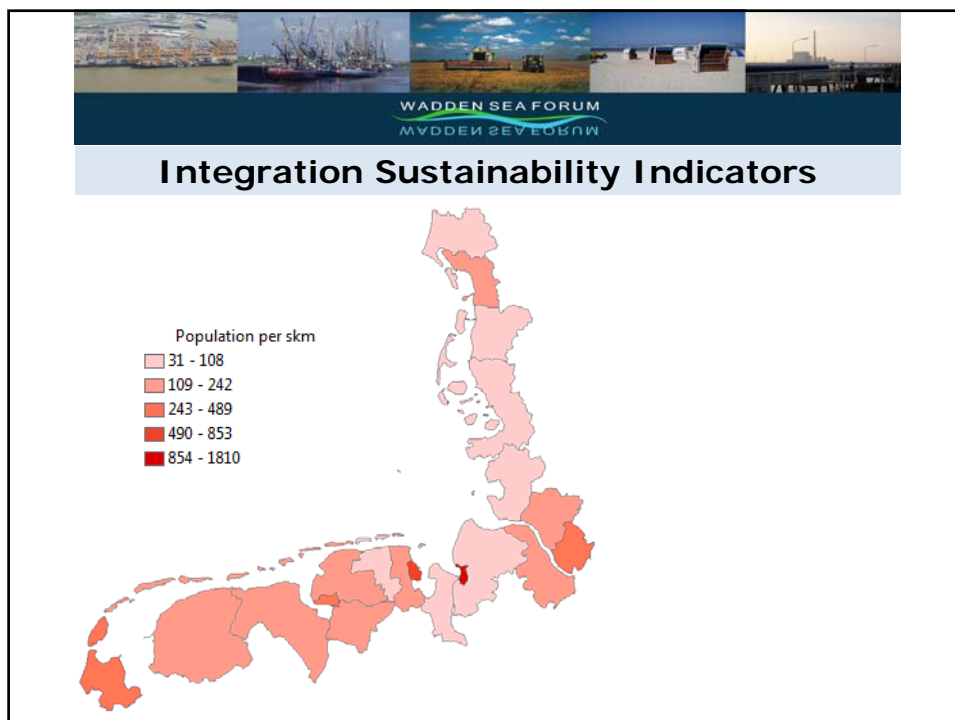
North Sea

**Add WMS Layer:**

Enter the Capabilities URL:

**WMS Capabilities**

Name	Title
L416	GK25 - Detailkartierung - Übersicht
L160	GK25 - Geologische Karte, Detailkartierung
group_340	#GK25 - Geologische Karte, Detailkartierung (Gruppe)
L415	GK25 - Übersichtskartierung - Übersicht
L161	GK25 - Geologische Karte, Übersichtskartierung
group_342	#GK25 - Geologische Karte, Übersichtskartierung (Gruppe)
L108	GKK25 - Profiltypen des Küstenholozäns
L109	GKK25 - Relief des Küstenholozäns (GHBK25 - Tiefenlinien)
L110	GKK25 - Relief des Küstenholozäns (GHBK25 - Tiefenstufen)
L106	GKG50 - GK50 Auswertung: Hochwassergefährdung
L105	GK50 - Geologische Karte





**WSF and a sustainable WSR**



**Thank you for your attention**

[www.waddensea-forum.org](http://www.waddensea-forum.org)