

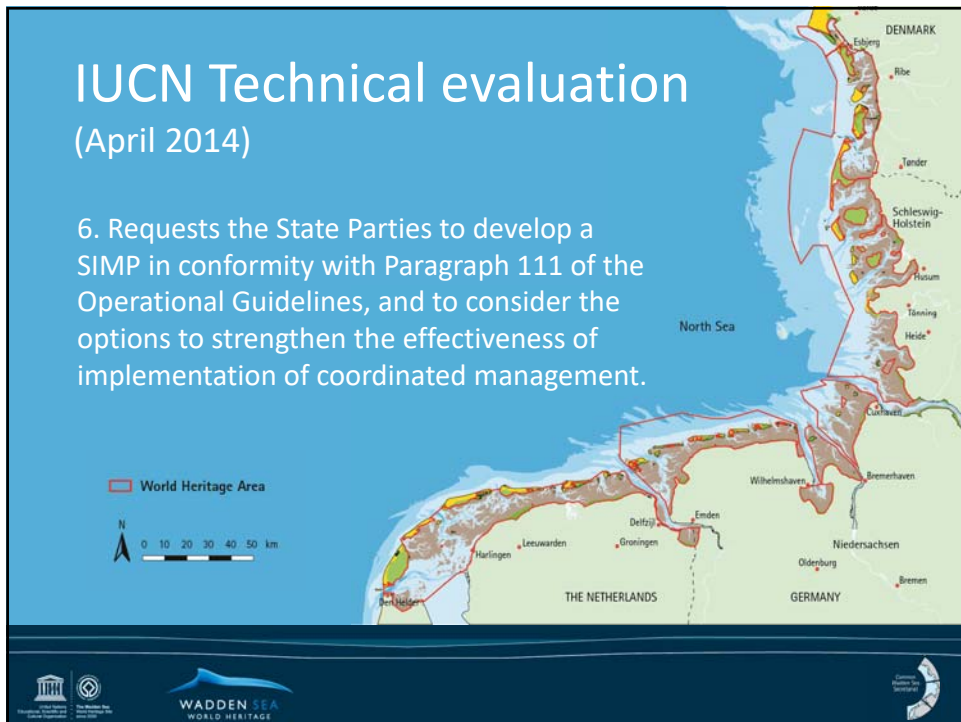


Building our way to SIMP

Single Integrated Management Plan

Groningen, 10.05.2019
WSF-35
Common Wadden Sea Secretariat

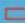
   




IUCN Technical evaluation

(April 2014)

6. Requests the State Parties to develop a SIMP in conformity with Paragraph 111 of the Operational Guidelines, and to consider the options to strengthen the effectiveness of implementation of coordinated management.

 World Heritage Area





 0 10 20 30 40 50 km

DENMARK
Esbjerg
Ribe
Tønder
Schleswig-Holstein
Husum
Tönning
Heide
Lübeck

THE NETHERLANDS
Leeuwarden
Groningen
Deiĳfĳ
Emden
Wilhelmshaven
Bremerhaven
Niedersachsen
Oldenburg
Bremen

GERMANY

North Sea

Leeuwarden Declaration

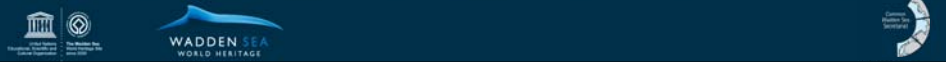
Annex 1

Aim

Protection of OUV and integrity as shared trilateral responsibility

Objectives

- Overview of trilateral management
- Support the countries in implementation of trilateral strategies and plans on the ground
- Coordinated management considering regional management systems.



Leeuwarden Declaration

Annex 1

Content

overarching issues needed to be managed with priority and in a consistent way to maintain the OUV and the integrity.

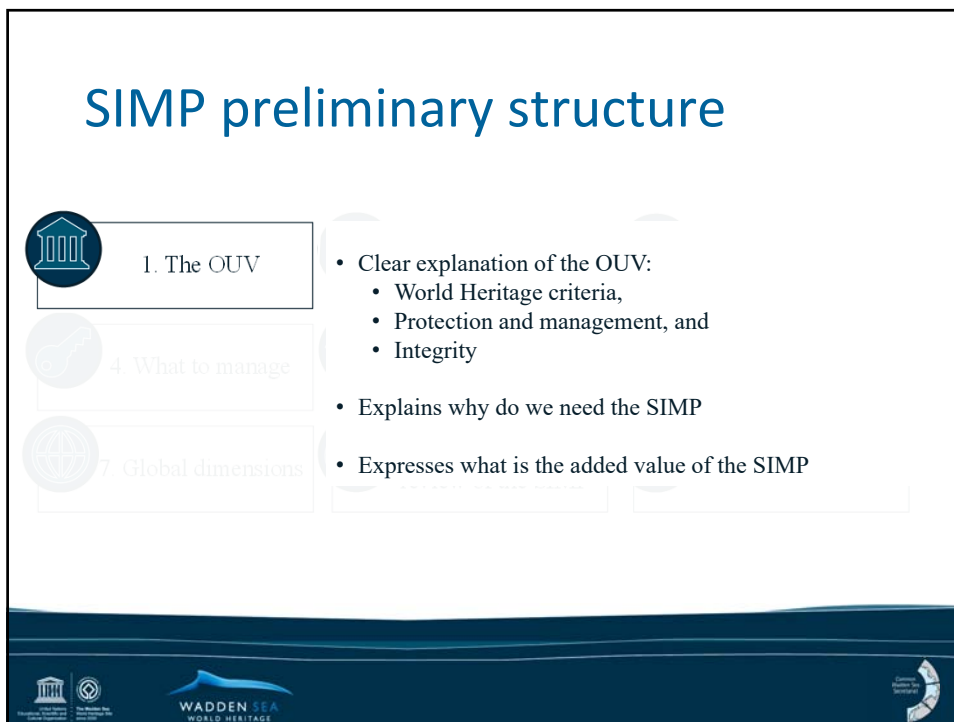
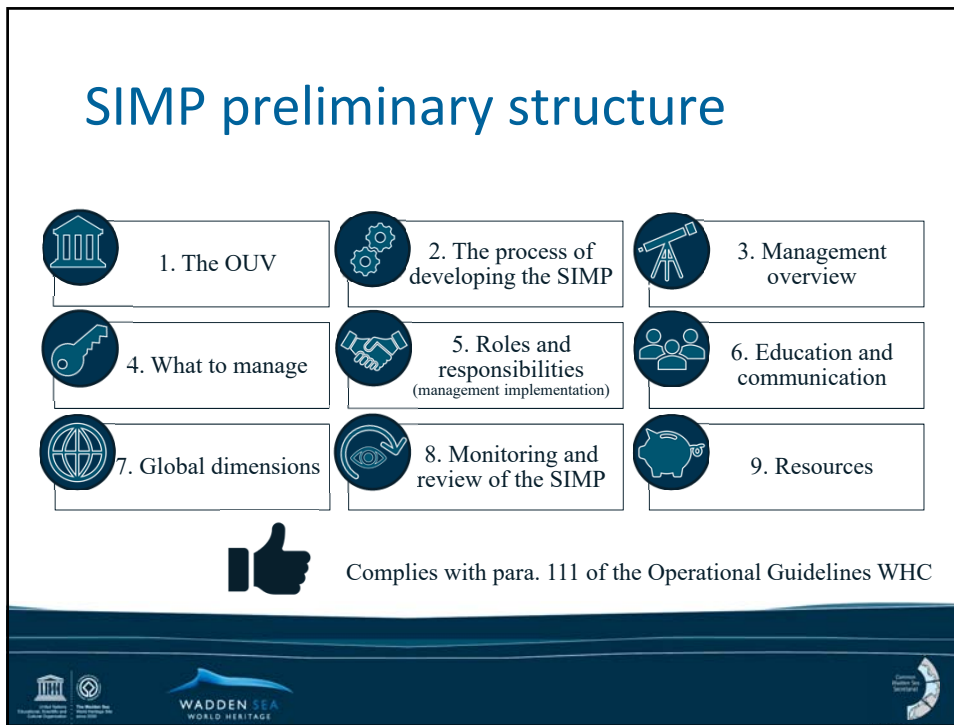
Criteria

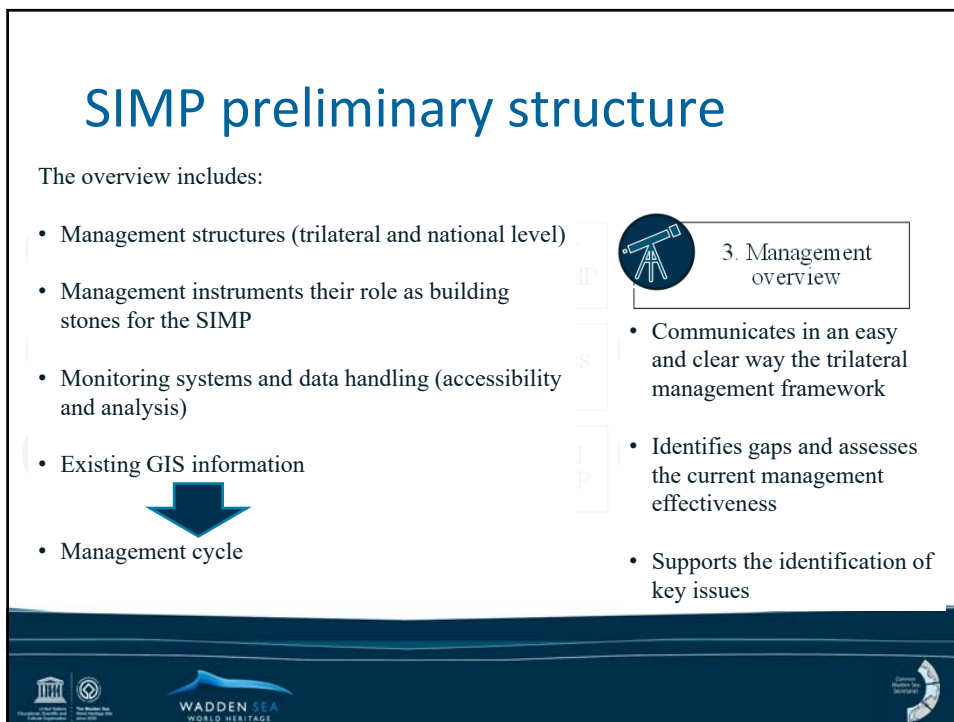
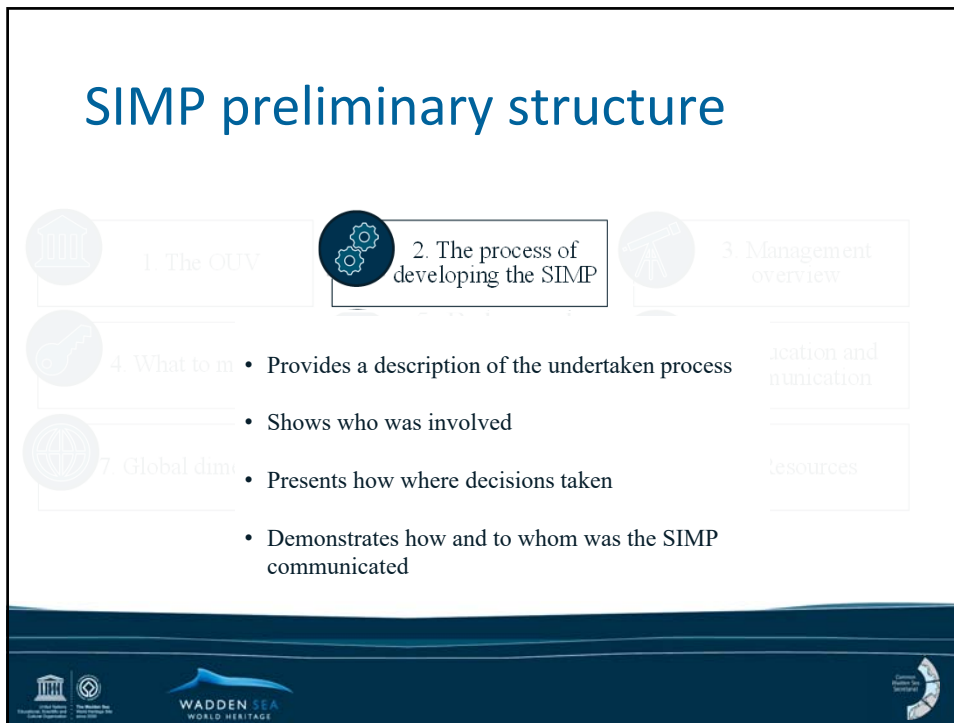
- Main and prior management issues at trilateral level
- Urgency to enhance management effectiveness trilaterally
- Maintain and protect the OUV

→ **Starting point is a preliminary structure**

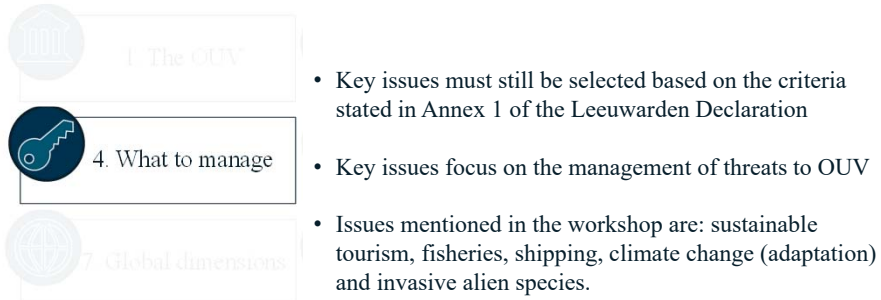
Contents and priorities may be adapted during the process







SIMP preliminary structure




SIMP preliminary structure




SIMP preliminary structure


- Describes the communication means during the development of the SIMP
- Describes communication within the TWSC and to the public
- Provides an analysis of the role that the IWSS may play for the SIMP
- Communication and education tools to use “on the ground”






3 Management overview




6. Education and communication




9 Resources


SIMP preliminary structure




1 The OUV




2 The process of developing the SIMP



3 Management overview






4 What to manage

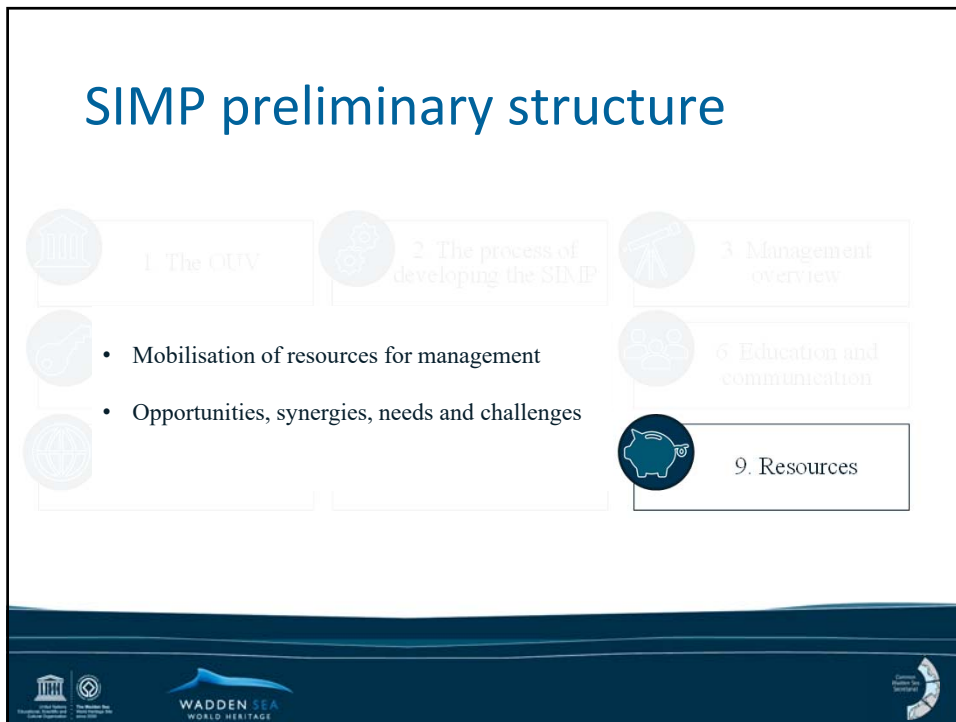
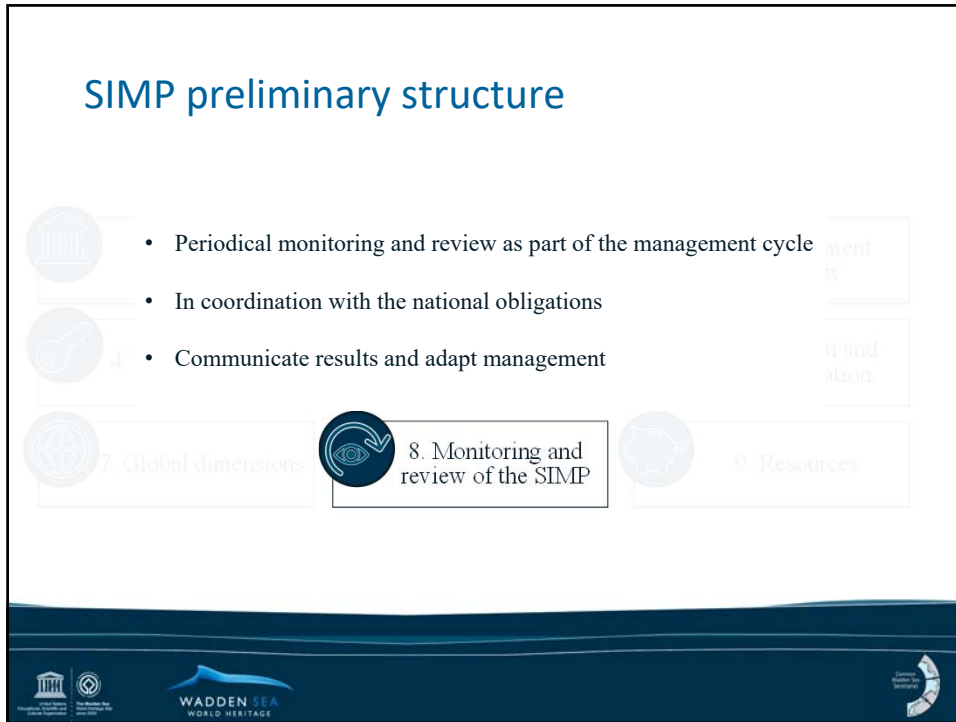


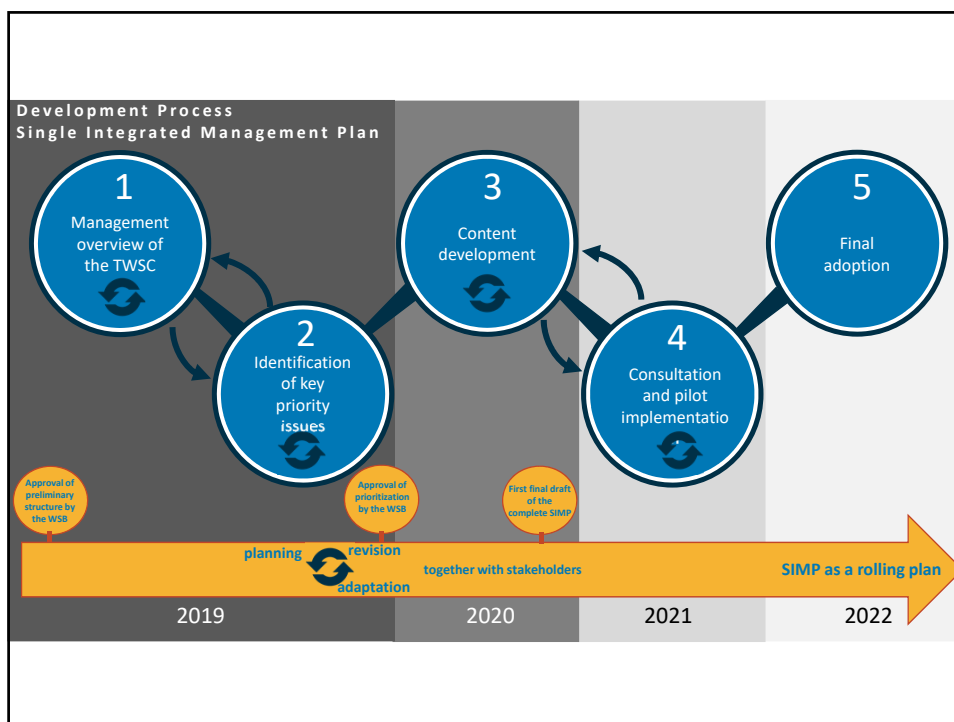
7. Global dimensions

Links the trilateral management into the global dimension of World Heritage:

- International cooperation
- Swim and Flyway
- The contribution to global and regional conventions, agreements, etc





Most often mentioned elements of a successful SIMP

